

Please make sure to read the enclosed Ninja® Owner's Guide prior to using your unit.

NINJA®

SINGLE-SERVE

PODS & GROUNDS

SPECIALTY COFFEE MAKER

**QUICK
START
GUIDE**

BEFORE YOUR FIRST BREW

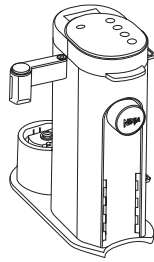
IMPORTANT: Ensure you prime your coffee maker before your first brew.

TO PRIME YOUR COFFEE MAKER:

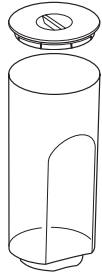
- 1 Clean all accessories before your first brew.
- 2 Plug in the power cord and the coffee maker will turn on automatically.
- 3 Lift the water reservoir off its base. Remove the reservoir lid. Fill the reservoir up to at least the 710 mL (24 oz.) line with fresh water and place it back on the base.
- 4 Open the coffee maker lid, remove the Ninja® Pod Adapter and insert the Permanent Filter. Do not add coffee; close the lid.
- 5 Place a 710 mL (24 oz.) cup under the nozzle and prime the system by running a 710 mL (24 oz.) Classic brew with water only.
- 6 Once the brew is complete, discard the water; coffee maker is now primed for use.

NOTE: If using the brewer in a high-altitude area, running a calibration brew is required. Not running a high-altitude calibration brew in a high-altitude area will result in excessive steaming during brewing. Refer to page 5 of the Owner's Guide for instructions on running a high-altitude calibration brew.

WHAT'S IN THE BOX



NINJA PODS & GROUNDS SPECIALTY COFFEE MAKER



1.65 L (56 OZ.) REMOVABLE WATER RESERVOIR



ADJUSTABLE CUP TRAY



BREW BASKET

Comes fully installed in the brewer. It must always be inserted when brewing pods or grounds.



NINJA® POD ADAPTER

Comes fully installed in the coffee maker. Ninja® Pod Adapter must always be inserted in the brew basket when brewing pods.



PERMANENT FILTER

Located in the adapter storage on the right side of the unit. Permanent Filter must always be inserted in the brew basket when brewing grounds.



ADAPTER STORAGE BIN



FROTHER WHISK



NINJA SMART SCOOP™

Use this to measure coffee grounds.

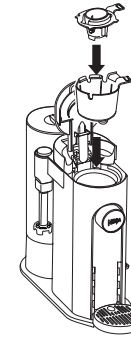
USING THE NINJA® POD ADAPTER AND PERMANENT FILTER

The Ninja Single-Serve Pods & Grounds Specialty Coffee Maker comes with the unique Ninja® Pod Adapter already installed and a Permanent Filter in the Adapter Storage Bin located on the right side of the coffee maker. Always ensure the Ninja® Pod Adapter or Permanent Filter is installed in the brew basket.



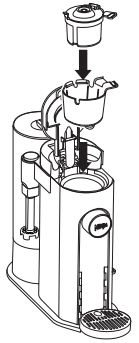
INSTALLING THE NINJA POD ADAPTER

Place the Ninja Pod Adapter in the brew basket, ensure the handle is aligned with the brew basket handle, and press down on the Ninja® Pod Adapter firmly until it clicks into place.



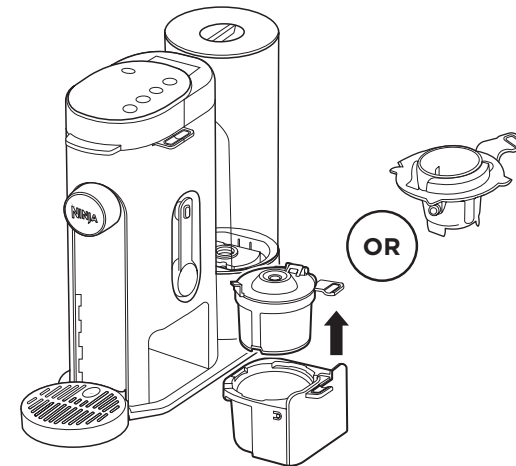
INSTALLING THE PERMANENT FILTER

Place the Permanent Filter in the brew basket and ensure the handle is aligned with the brew basket handle.



ADAPTER STORAGE BIN

The adapter storage is located on the right side of the unit and can be used for either the Permanent Filter or the Ninja Pod Adapter.



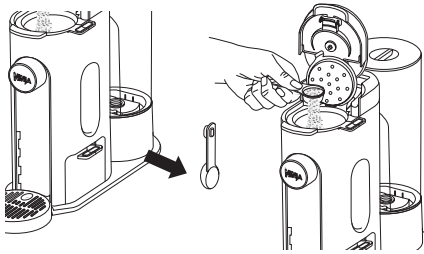
HOW TO BREW

1 CHOOSE A METHOD



GROUNDS

- 1 Place the Permanent Filter in the brew basket.
- 2 Using the Ninja Smart Scoop, measure out grounds following the measurements on the scoop or in the chart below.



COFFEE MEASUREMENT CHART

Serving Size	Ninja Smart Scoop
192 mL (6 oz.)	2-3 Scoops
251 mL (8 oz.)	
281 mL (10 oz.)	
340 mL (12 oz.)	
414 mL (14 oz.)	3-5 Scoops
541 mL (18 oz.)	
710 mL (24 oz.)	
Specialty 118 mL (4 oz.)	4 Scoops

- 3 Close the Permanent Filter and then the coffee maker lid.

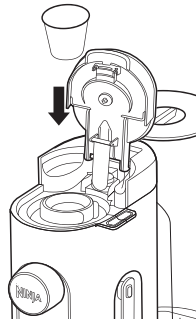
OR



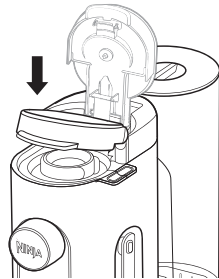
PODS

- 1 Place the Ninja Pod Adapter in the brew basket.
- 2 Place a pod in the Ninja Pod Adapter.

IMPORTANT: Ensure the pod is not damaged, torn, or expired. **DO NOT** remove the top of the K-Cup Pod.



- 3 Press the coffee maker lid down firmly to pierce the pod and ensure that the lid is completely closed. There will be an audible click and some resistance when closing the handle as the needle punctures the pod.



IMPORTANT: There is a chance the needle could become clogged after multiple uses. If you find that your needle seems clogged, a paper clip will fit perfectly inside the needle to clean it out.

2 SELECT A BREW STYLE



CLASSIC

Smooth, well-balanced flavour.



RICH

More intense flavour that stands up to milk, cream, or flavouring.



OVER ICE

Specially designed to brew hot over ice for freshly brewed iced coffee that is not watered down.
Always fill your vessel to the top with ice cubes before brewing Over Ice.



SPECIALTY

A super-rich concentrate that allows you to make coffee-based drinks like cappuccinos and lattes.
Will only brew 118 mL (4 oz.).

3 SELECT A SIZE



PODS

192 mL (6 oz.) 251 mL (8 oz.) 281 mL (10 oz.) 340 mL (12 oz.)



GROUNDS

192 mL (6 oz.) 251 mL (8 oz.) 281 mL (10 oz.) 340 mL (12 oz.) 414 mL (14 oz.) 541 mL (18 oz.) 710 mL (24 oz.)

*Approximate brew volumes based on Classic brew. Rich brew will produce slightly less output. Refer to the Approximate Brew Volumes chart in the Owner's Guide for more information.

4 BREW



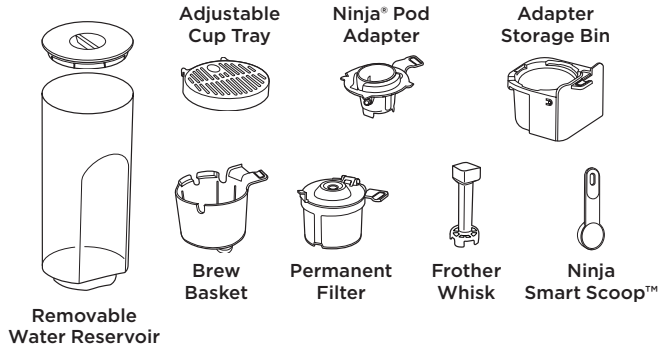
brew

Press the **BREW BUTTON** to start brewing. A confirmation beep will sound and the progress bar on the control panel will illuminate to indicate the status of the brew.

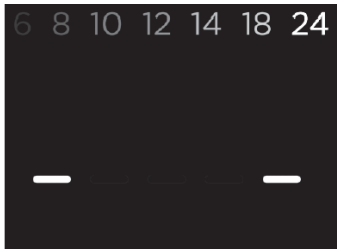
NOTE: THE BREW MAY PAUSE ONCE OR MULTIPLE TIMES DURING THE BREW CYCLE. THIS IS NORMAL. Pausing allows the coffee grounds to fully extract and unlock the full flavour of the brew style.

DISHWASHER-SAFE PARTS

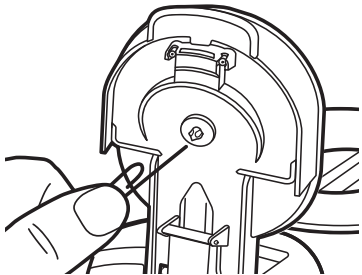
All parts (excluding the main unit) are dishwasher safe. We recommend cleaning used parts after each brew.



CLEANING THE TOP & BOTTOM NEEDLES



Check the top and bottom needles regularly for coffee ground buildup. If your unit's display is flashing all sizes at once or you are experiencing inconsistent brews, there may be a clog in the needles.



To fix this, grab a paper clip (or something similar) and insert it into each needle. Move the paper clip around to release any leftover grounds. If there is still an error message after cleaning, we recommend waiting a few minutes, powering the unit off and back on, and then starting the brew over.

NINJA®

SINGLE-SERVE

PODS & GROUNDS

SPECIALTY COFFEE MAKER

For questions or to register your product, contact us at
1 855 520-7816 or visit us online at ninjakitchen.ca



@ninjakitchencanada

PB051CCO_QSG_E_REV_MV2

© 2023 SharkNinja Operating LLC

NINJA is a registered trademark of SharkNinja Operating LLC.
NINJA SMART SCOOP is a trademark of SharkNinja Operating LLC.