



## BLAST™ PORTABLE BLENDER BC151Q Series | Owner's Guide

# IMPORTANT SAFETY INSTRUCTIONS

PLEASE READ ALL INSTRUCTIONS BEFORE USE • FOR HOUSEHOLD USE ONLY

	<b>Read and review instructions for operation and use.</b>
	<b>Indicates the presence of a hazard that can cause personal injury, death or substantial property damage if the warning included with this symbol is ignored.</b>
	<b>For household use only.</b>
	<b>Indicates location to attach USB-C cord for charging unit.</b>
<b>When using electrical appliances, basic safety precautions should always be followed, including the following:</b>	

**⚠ WARNING:** To reduce the risk of injury, fire, electrical shock or property damage, basic safety precautions must always be followed, including the following numbered warnings and subsequent instructions. Do not use appliance for other than intended use.

- 1 Read all instructions prior to using the appliance and its accessories.
- 2 Use only a power supply with an extra low voltage corresponding to the marking on the bottom of the motor base.
- 3 **ALWAYS** exercise care when handling the BlastBlade™ Assembly. The blades are sharp, handle carefully. **ONLY** grasp the BlastBlade™ Assembly by the motor base. Failure to use care when handling the BlastBlade™ Assembly will result in a risk of laceration.
- 4 Take your time and exercise care during unpacking and appliance setup. This appliance contains sharp blades that can cause injury if mishandled.
- 5 Take inventory of all contents to ensure you have all parts needed to properly and safely operate your appliance.
- 6 Before use, wash all parts that may contact food. Follow washing instructions covered in this Owner's Guide.
- 7 **DO NOT** blend hot liquids, effervescent, or carbonated liquids, as doing so may cause pressure buildup, resulting in risk of burns or other injuries to the user.
- 8 **DO NOT** fill the blending vessel past the **MAX FILL** line.
- 9 Blades are sharp. Handle carefully.
- 10 Keep hands, hair, and clothing out of the vessel when loading and operating. **DO NOT put your hands inside the vessel or anywhere near the BlastBlade™ Assembly. Blades can still activate when the sip lid is removed.**
- 11 Before operation, ensure all utensils are removed from containers. Failure to remove utensils can cause the vessel to shatter and potentially result in personal injury and property damage.
- 12 To protect against the risk of fire from battery damage, **DO NOT** submerge the motor base in any form of liquid.
- 13 **DO NOT** store outdoors or allow the product to be submerged in liquid.
- 14 **DO NOT** allow children to operate this appliance or use as a toy. Close supervision is necessary when any appliance is used near children.
- 15 This appliance is **NOT** intended to be used by people with reduced physical, sensory, or mental capabilities, or lack of experience and knowledge, unless they have been given supervision or instruction concerning use of the appliance by a person responsible for their safety.
- 16 Before each use, inspect BlastBlade™ Assembly for damage. If a blade is bent or damage is suspected, contact SharkNinja to arrange for replacement.
- 17 **DO NOT** attempt to sharpen blades.
- 18 **DO NOT** allow any part of the unit to contact hot surfaces, including stoves and other heating appliances.
- 19 **ALWAYS** use the appliance on a dry and level surface.

# IMPORTANT SAFETY INSTRUCTIONS

PLEASE READ ALL INSTRUCTIONS BEFORE USE • FOR HOUSEHOLD USE ONLY

- 20 Keep hands, hair, and clothing out of the vessel when loading and operating.
- 21 **ONLY** use attachments and accessories that are provided with the product or are recommended by SharkNinja. The use of attachments not recommended or sold by SharkNinja may cause fire, electric shock, or injury.
- 22 During operation and handling of the appliance, avoid contact with moving parts.
- 23 **DO NOT** operate the appliance with an empty container.
- 24 **DO NOT** microwave any containers or accessories provided with the appliance.
- 25 **DO NOT** perform grinding operations.
- 26 **DO NOT** attempt to defeat the interlock mechanism. Ensure the vessel and sip lid are properly installed before operation.
- 27 **DO NOT** expose the containers and accessories to extreme temperature changes. They may experience damage.
- 28 **NEVER** leave the appliance unattended while in use.
- 29 If you find unmixed ingredients sticking to the sides of the cup, turn off the appliance using the Power button, and use a scraper to dislodge ingredients.
- 30 **DO NOT** attempt to remove the vessel and/or sip lid from the motor base while the BlastBlade™ Assembly is still spinning. Allow the appliance to come to a complete stop before removing lid and/or vessel.
- 31 **DO NOT** store ingredients for extended amounts of time before or after blending them. Some foods may contain active ingredients or release gases that will expand if left in a sealed container, resulting in excessive pressure buildup that can pose a risk of injury.
- 32 If the appliance overheats, a thermal switch will activate and temporarily disable the motor. To reset, turn **OFF** the Ninja Blast™ Portable Blender using the Power button and allow it to cool for approximately 15 minutes before using again.
- 33 **DO NOT** process dry ingredients without adding liquid to the blending vessel. Unit is not intended for dry blending.
- 34 Operate **ONLY** with the sip lid on.
- 35 **DO NOT** refrigerate or freeze blender.

## BATTERY USE

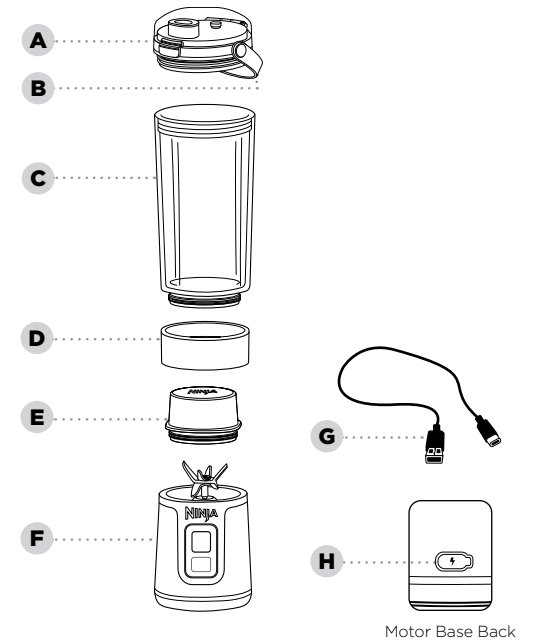
- 1 The battery is the power source for the Ninja Blast™ Portable Blender. Carefully read and follow all charging instructions.
- 2 **DO NOT** incinerate this appliance even if it is severely damaged. The lithium-ion batteries can explode in a fire. Always properly recycle products powered by lithium-ion batteries.
- 3 Since there is no power cord, prevent accidental blade activation by ensuring the blender is turned **OFF** when not in use, while cleaning, or when drinking from the sip lid.
- 4 Keep the battery away from all metal objects such as paper clips, coins, keys, nails, or screws. Shorting the battery terminals together increases the risk of fire or burns.
- 5 Under abusive conditions, liquid may be ejected from the battery. Avoid contact with this liquid, as it may cause irritation or burns. If contact occurs, flush with water. If liquid contacts eyes, seek medical help.
- 6 This unit contains batteries that are only replaceable by skilled persons.
- 7 This unit contains batteries that are non-replaceable and moving parts that potentially present risk to the user.

## SAVE THESE INSTRUCTIONS

## PARTS

- A Sip Lid
- B Carry Handle
- C Blending Vessel\*
- D Vessel Cap\*
- E Blade Cover\*
- F Motor Base with BlastBlade™ Assembly
- G USB-C Charging Cord
- H Charging Port

\*Blending vessel sizes and quantity, and accessories, vary by model.



## CHARGING ⚡

Charge the unit using the provided charging cord and a 5V 3A power supply until the LEDs illuminate solid green. Charging port is located at the back of the motor base.

## BEFORE FIRST USE

**IMPORTANT:** Review all warnings at the beginning of this Owner's Guide before proceeding.

### NOTES:

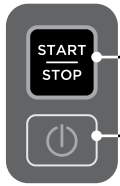
- Handle the BlastBlade™ Assembly by grasping around the motor base.
- All attachments are BPA free. All attachments **EXCEPT** the motor base are top-rack dishwasher safe. **DO NOT** use a heated dry cycle. Ensure lid and vessel are removed from motor base before placing in the dishwasher. Exercise care when handling BlastBlade™ Assembly.

Remove all packaging materials from the unit. Exercise care when unpacking BlastBlade™ Assembly, as the blade are sharp.

Wash vessel, lid, and BlastBlade™ Assembly in warm, soapy water using a dishwashing utensil with a handle to avoid direct contact with the blades. **DO NOT** submerge the motor base in water when cleaning. Exercise care when handling BlastBlade™ Assembly, as the blades are sharp.

Thoroughly rinse and air-dry all appropriate parts.

## USING THE CONTROL PANEL



### PROGRAMS:

#### START/STOP BUTTON

Press Start/Stop button once to activate the 30-second blend cycle.

#### POWER BUTTON

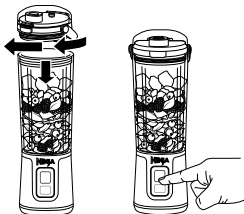
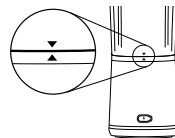
Press Power button to turn unit **ON** and **OFF**.

LED Shows	TROUBLESHOOTING	Solutions
Flashing WHITE	Vessel and Base are Not Aligned	Ensure vessel and motor base are aligned using the arrows on the back of motor base and vessel.
Flashing ORANGE	Blades are Blocked	Move lodged ingredients from blade and restart blend program.
Solid RED	Needs Charge	Charge unit.
Flashing RED and BLUE	Abnormal charger	Defective or incorrect charger; unplug and find correct 5V 3A charger.
Clockwise-moving ORANGE LEDs	Unit Cool Down Time Out	Let unit sit at room temp for 15 minutes before using again.
Flashing WHITE and RED	While Charging	Call Customer Service.
Flashing RED in the bottom left and top right	While Blending	Call Customer Service.

## USING THE BLENDING VESSEL

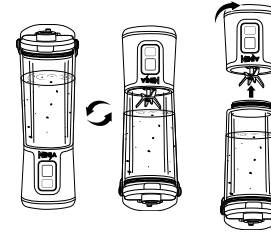
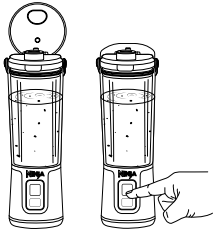
**IMPORTANT:** Review all warnings at the beginning of this Owner's Guide before proceeding.

- 1 Ensure the motor base is fully charged and the vessel is properly installed by aligning vessel arrow with motor base arrow located on the back of the motor base.



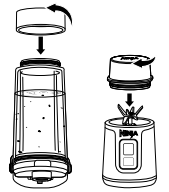
- 2 Turn unit **ON** by pressing the  $\text{\textcircled{P}}$  button until Start/Stop button lights illuminate.
- 3 Add ingredients, starting with liquids to the **MIN LIQUID** line then solid ingredients. If using ice, always add last. **DO NOT** fill ingredients past the **MAX FILL** line. Secure lid onto the vessel, twisting clockwise to tighten.
- 4 Blend for a 30-second blend cycle by pressing the Start/Stop button.

- 5 Open the sip lid to sip, or remove the lid to pour out blender outputs into another container. **DO NOT** remove vessel from motor base when filled. Empty vessel prior to removing from motor base.
- 6 After blending, power **OFF** the unit by pressing the  $\text{\textcircled{P}}$  button. Motor base should be turned **OFF** when drinking from the sip lid and when blender is no longer in use.



- 7 After blending is complete, ensure the lid is on tight and turn the blender upside down.
- 8 Twist motor base counterclockwise to remove it from the vessel, and set the motor base right side up.

- 9 Install the vessel cap on the bottom of the vessel by turning it clockwise. Install the blade cover on the motor base to cover the exposed blades by turning it clockwise.
- 10 Refer to the Care & Maintenance section for cleaning and storage instructions.



## CARE & MAINTENANCE

### CLEANING

Blades can still operate when the lid is removed. Always turn the unit **OFF** when cleaning without the lid on or when the BlastBlade™ Assembly is exposed.

#### Hand-Washing

Wash vessel, lid, and BlastBlade™ Assembly with warm, soapy water. Use a dishwashing utensil or cloth to clean the BlastBlade™ Assembly on the motor base. Exercise care when handling the BlastBlade™ Assembly on the motor base as the blades are sharp. Wipe the motor base with a clean, damp cloth. **DO NOT** submerge the motor base in water. Thoroughly rinse and air-dry all appropriate parts. After cleaning, let the USB-C charging port air-dry for 30 minutes before charging the unit.

#### Motor Base

The USB-C port is water resistant, which means the motor base can get rinsed in the sink; **HOWEVER DO NOT** put the motor base in the dishwasher or submerge it in water. Ensure the USB-C charger is not inserted before cleaning. Use the USB-C cover over the charging port when cleaning (feature not on all models).

### DEEPER CLEAN

#### Dishwasher

Vessel and sip lid are top-rack dishwasher safe. **DO NOT** use a heated dry cycle. Ensure the vessel and sip lid are removed from the motor base before being placed in the dishwasher.

### STORING

Store the unit upright and with the lid, vessel, and motor base fully assembled.

**DO NOT** store blended or unblended ingredients in the vessel with the BlastBlade™ Assembly for prolonged periods of time.

**DO NOT** stack items on top of the vessel. Store any remaining attachments alongside the unit or in a cabinet where they will not be damaged or create a hazard.


If your unit needs servicing, call Customer Service at 1-877-646-5288. So we may better assist you, please register your product online at [registeryourninja.com](https://www.ninjakitchen.com/registeryourninja) and have the product on hand when you call.

## TROUBLESHOOTING GUIDE

**⚠WARNING:** To reduce the risk of shock and unintended operation, turn **OFF** unit before troubleshooting.

**Ensure the unit is not charging when troubleshooting. Ensure the unit is fully charged and vessel is properly aligned.**

**Control panel doesn't turn off.**

- Press the  button to turn the unit **ON** and **OFF**.

**Doesn't mix well; ingredients get stuck.**

- When filling the vessel, start with liquid to the **MIN LIQUID** line, then fresh fruit or veggies, followed by leafy greens or herbs. Add your seeds, powders, or nut butters. Finish with ice or frozen ingredients.
- If ingredients are routinely getting stuck, adding some liquid will usually help. Ensure you have filled the vessel to or above the **MIN LIQUID** line. You can also shake the blender while blending, or turn the blender upside down, start a blend cycle, and turn it right side up, to move ingredients while blending.

**Sip lid is hard to assemble on the vessel.**

- Set the assembled motor base and vessel on a level surface. Place the sip lid on the top of the vessel and align the threads so the sip lid sits flat. Turn clockwise until you have a tight seal.

**Vessel is hard to assemble on the motor base.**

- Set the motor base on a level surface. Place the vessel on the top of the motor base and align the threads so the vessel sits flat. Turn clockwise until you have a tight seal. The LEDs on the display will be solid purple when the vessel is properly installed.

## PRODUCT REGISTRATION

Please visit [registeryourninja.com](https://registeryourninja.com) to register your new Ninja® product within ten (10) days of purchase. You will be asked to provide the store name, date of purchase, and model number along with your name and address.

The registration will enable us to contact you in the unlikely event of a product safety notification. By registering, you acknowledge you have read and understood the instructions for use and warnings set forth in the accompanying instructions.

## ORDERING REPLACEMENT PARTS

To order additional parts and attachments, visit [ninjaaccessories.com](https://ninjaaccessories.com).

## FCC WARNINGS

**NOTE:** This product has been tested and found to comply with the limits for a Class B digital device, pursuant to part 15 of the FCC Rules. These limits are designed to provide reasonable protection against harmful interference in a residential installation. This product generates, uses and can radiate radio frequency energy and, if not installed and used in accordance with the instructions, may cause harmful interference to radio communications. However, there is no guarantee that interference will not occur in a particular installation. If this product does cause harmful interference to radio or television reception, which can be determined by turning the product off and on, the user is encouraged to try to correct the interference by one or more of the following measures: Reorient or relocate the receiving antenna. Increase the separation between the product and receiver. Connect the product into an outlet on a circuit different from that to which the receiver is connected. Consult the dealer or an experienced radio/TV technician for help.

This product complies with part 15 of the FCC Rules. Operation is subject to the following two conditions: This product may not cause harmful interference, and this product must accept any interference received, including interference that may cause undesired operation.

Changes or modifications not expressly approved by the party responsible for compliance could void the user's authority to operate this product.



## ONE (1) YEAR LIMITED WARRANTY

NJA\_1\_YR\_IB\_LMTD\_WRNTY\_US\_ENG

The One (1) Year Limited Warranty applies to purchases made from authorized retailers of **SharkNinja Operating LLC**. Warranty coverage applies to the original owner and to the original product only and is not transferable.

SharkNinja warrants that the unit shall be free from defects in material and workmanship for a period of one (1) year from the date of purchase when it is used under normal household conditions and maintained according to the requirements outlined in the Owner's Guide, subject to the following conditions and exclusions:

**What is covered by this warranty?**

1. The original unit and/or non-wearable parts deemed defective, in SharkNinja's sole discretion, will be repaired or replaced up to one (1) year from the original purchase date.
2. In the event a replacement unit is issued, the warranty coverage ends six (6) months following the receipt date of the replacement unit or the remainder of the existing warranty, whichever is later. SharkNinja reserves the right to replace the unit with one of equal or greater value.

**What is not covered by this warranty?**

1. Normal wear and tear of wearable parts (such as blending vessels, lids, cups, blades, blender bases, removable pots, racks, pans, etc.), which require regular maintenance and/or replacement to ensure the proper functioning of your unit, are not covered by this warranty. Replacement parts are available for purchase at [ninjaaccessories.com](https://ninjaaccessories.com).
2. Any unit that has been tampered with or used for commercial purposes.
3. Damage caused by misuse, abuse, negligent handling, failure to perform required maintenance (e.g., failure to keep the well of the motor base clear of food spills and other debris), or damage due to mishandling in transit.
4. Consequential and incidental damages.
5. Defects caused by repair persons not authorized by SharkNinja. These defects include damages caused in the process of shipping, altering, or repairing the SharkNinja product (or any of its parts) when the repair is performed by a repair person not authorized by SharkNinja.
6. Products purchased, used, or operated outside North America.

**How to get service**

If your appliance fails to operate properly while in use under normal household conditions within the warranty period, visit [ninjakitchen.com/support](https://ninjakitchen.com/support) for product care and maintenance self-help. Our Customer Service Specialists are also available at **1-877-646-5288** to assist with product support and warranty service options, including the possibility of upgrading to our VIP warranty service options for select product categories. So we may better assist you, please register your product online at [registeryourninja.com](https://registeryourninja.com) and have the product on hand when you call.

SharkNinja will cover the cost for the customer to send in the unit to us for repair or replacement. A fee of \$20.95 (subject to change) will be charged when SharkNinja ships the repaired or replacement unit.

**How to initiate a warranty claim**

You must call **1-877-646-5288** to initiate a warranty claim. You will need the receipt as proof of purchase. We also ask that you register your product online at [registeryourninja.com](https://registeryourninja.com) and have the product on hand when you call, so we may better assist you. A Customer Service Specialist will provide you with return and packing instruction information.

**How state law applies**

This warranty gives you specific legal rights, and you also may have other rights that vary from state to state. Some states do not permit the exclusion or limitation of incidental or consequential damages, so the above may not apply to you.



## REGISTER YOUR PURCHASE



registeryourninja.com



Scan QR code using mobile device

## RECORD THIS INFORMATION

Model Number: \_\_\_\_\_

Serial Number: \_\_\_\_\_

Date of Purchase: \_\_\_\_\_  
(Keep receipt)

Store of Purchase: \_\_\_\_\_

## TECHNICAL SPECIFICATIONS

Voltage: 5V<sup>DC</sup>, 0.5A-3A

---

### SharkNinja Operating LLC

US: Needham, MA 02494

1-877-646-5288

ninjakitchen.com

Illustrations may differ from actual product. We are constantly striving to improve our products; therefore the specifications contained herein are subject to change without notice.

BLASTBLADE and NINJA BLAST are trademarks of SharkNinja Operating LLC.

This product may be covered by one or more U.S. patents. See [sharkninja.com/patents](http://sharkninja.com/patents) for more information.

© 2023 SharkNinja Operating LLC

BC151QSeries\_IB\_REV\_Mv3



@ninjakitchen